

Beth-Wood Acorn Field Lighting Project



Proposed Installation of Field Lighting
Prepared for Stakeholders

History of Beth-Wood

Beth-Wood Baseball has been a positive force in the Town of Woodbridge since its founding in 1972, as the Woodbridge Fathers Baseball League. The league was created by parents who wanted to give their youth a stronger, more competitive baseball experience. Over the decades Beth-Wood has grown to include children from ages 4 to 16, offering Tee Ball, Rookies, Minors, Majors, Softball (now a separate affiliated Little League), and Babe Ruth programs.

Beth-Wood regularly draws hundreds of families to its events, such as the Opening Day Ceremony, and the State-wide 8U Friendship Tournament.

Through these events, Beth-Wood continues to foster connections across Woodbridge and nearby towns, strengthening community bonds and civic engagement.

Community Contributions

Through volunteer effort and league funds, Beth-Wood has contributed the following to the town facilities:

- Safe fencing
- Permanent dugouts
- Batting cages
- Press booths
- Modern LED scoreboards
- Renovated storage facilities
- Annual donation to town Park and Recreation

These and many other improvements are utilized by Beth-Wood and the broader community alike.

Our growth to approximately 300 children and our success in hosting the 8u Friendship Tournament also bring visibility and pride to our town, while partnerships with local schools and coaches enhance athletic development opportunities for our youth. With ongoing community support, Beth-Wood continues to enrich Woodbridge by promoting healthy activity, enhancing public spaces, and fostering lasting community traditions.

Beth-Wood's Continued support to our Community

1. \$3,000 Annual donation to Town of Woodbridge - Parks Dept. (30+ years)

2. Multiple \$500 Annual Scholarships to HS Seniors (25+ years)

3. Major Sponsor for the Annual Woodbridge Recreation Road Race (20+ years)

4. Major Sponsor for Annual Beecher Road School Halloween HOOT (25+ years)

5. Major Sponsor for Woodbridge Annual Truck or Treat Event at Halloween (since it's beginning)

6. Major Sponsor for Annual Color Fun Run at Amity MS - Bethany (7+ years)

7. Recognize Annual Woodbridge First Selectman's Award recipient with monetary check (4 years)

8. Annual Donation to Tommy Fund at Yale - New Haven to fight childhood cancer (30+ years)

Project Overview

- Install modern LED directional field lighting at Beth-Wood Acorn Field 1 & 2.
- Enable evening practices and games
- Improve safety and usability
- Support community and youth sports programs

Current Challenges

- Limited daylight hours restrict field usage
- Seasonal constraints reduce scheduling flexibility
- Safety concerns during low-light conditions
- Missed opportunities for community events

Proposed Lighting Solution

- Energy-efficient LED sports lighting
- Even field illumination with minimal glare
- Timers and controls to manage usage
 - B-W anticipates using lighting on nights, as needed from dusk to 9PM. With an automatic shut down at 9PM.
 - Games would not start later than 6PM.
- Designed to meet recreational field standards and meet town P&Z requirements and regulations.
- Work closely with the town and Parks and Rec to coordinate our installation and restoration of the project.

Key Benefits

- Extended hours of play and practice
- Increased safety for players and spectators
- Enhanced field value and utilization
- Positive impact on community engagement
- Every child at any level can now play under the lights at the fields
- Put B-W on par with other towns that have lighting such as Milford, Oxford, Orange and Wolcott, New Haven, North Haven, West Haven, Branford, Cheshire and Guilford to name a few.



Next Steps

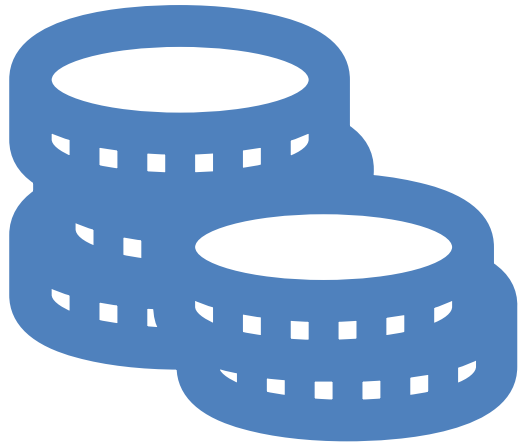


Approval by Board
of Selectman

File for P&Z approval
and Building Permits

Fundraise money by
Beth-Wood

Order materials and
schedule installation



Costs of Project

B-W, after getting competitive quotes for Lighting and installation has determined a budget of \$350,000.00-\$380,000.00.

This includes all costs associated with the installation and Electrical service for this project. The Power for the lighting will be paid for by B-W.

All Funds will be raised by B-W.

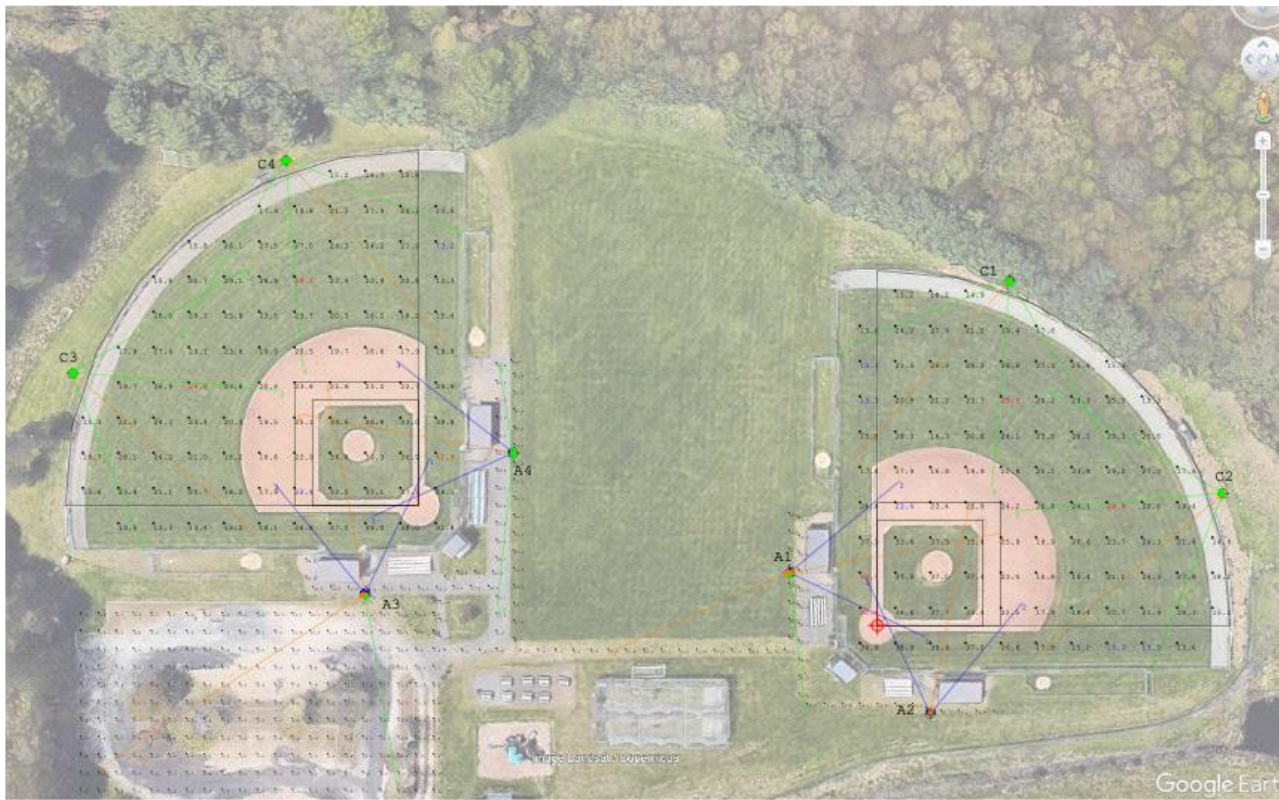


Field Lighting Renderings – Daytime



Field Lighting Renderings – Night

Technical Photometrics



Pole Wattage Summary
Scene: WALKWAY-PARKING

Label	Total Watts
A1	4000
A2	2400
A3	4000
A4	4000
C1	3200
C2	3200
C3	3200
C4	3200
TOTAL	27200

Pole Summary
Scene: WALKWAY-PARKING

Poles	# Lum.	MH
A1-SB	3	60'
A1-WALKWAY	2	60'
A2-SB	3	60'
A3-PARKING LOT	2	60'
A3-SB	3	60'
A4-SB	3	60'
A4-WALKWAY	2	60'
C1	4	60'
C2	4	60'
C3	4	60'
C4	4	60'

Calculation Summary
Scene: WALKWAY-PARKING

Label	Area Size	Units	Avg	Max	Min	Max/Min	# Pts	PtsPctr	PtsSpTb	CV	UG
1_SB #1 INFIELD	60' x 60'	Fc	32.68	40.4	22.4	1.80	25	20	20	0.20	1.60
2_SB #1 OUTFIELD	200' RADIUS	Fc	20.96	29.9	13.3	2.25	73	20	20	0.23	1.78
3_SB #2 INFIELD	60' x 60'	Fc	32.42	41.9	22.4	1.87	25	20	20	0.19	1.61
4_SB #2 OUTFIELD	200' RADIUS	Fc	20.99	29.6	13.2	2.24	73	20	20	0.22	1.77
5_PARKING LOT		Fc	7.01	19.8	1.6	12.38	231	10	10	0.56	1.53
6_WALKWAY		Fc	20.42	57.8	7.0	8.26	103	10	N.A.	0.50	N.A.

Luminaire Schedule
Scene: WALKWAY-PARKING

Symbol	Qty	Label	LLF	Lum. Watts
■	16	TSLW-EV-NLV	0.950	800
■	10	TSLM-EV-NLV	0.950	800
■	8	TSLW-EV-NLV	0.950	800



Acorn Hill Park
Beth-Wood League Baseball,
Woodbridge, CT
Softball Field - 30'/20 Fc
25-4932-SB-AGI

DRAWN BY: AMP
Date: 12/1/2025
SCALE: NTS
Page 1 of 2
25-4932-SB-AGI

*** DISCLAIMER ***
DESIGN BASED OFF OF LATEST SATELLITE IMAGES AVAILABLE AT THE TIME OF DESIGN. ALL MEASUREMENTS/POLE LOCATIONS NEED TO BE FIELD VERIFIED FOR ACCURACY AND APPROVED BEFORE PRODUCTION CAN BEGIN.

Zero Light cut off



Acorn Hill Park
Beth-Wood League Baseball,
Woodbridge, CT
Softball Field - 30/20 Fc
25-4932-SB-AGI

© 2025 Techline Sports Lighting, Inc. All rights reserved. This document is the property of Techline Sports Lighting, Inc. and is intended for the use of the client. It is not to be distributed, copied, or reproduced without the written consent of Techline Sports Lighting, Inc. The information contained herein is confidential and may be subject to change without notice. Techline Sports Lighting, Inc. is not responsible for any errors or omissions in this document. The information contained herein is for informational purposes only and does not constitute an offer of any product or service. The information contained herein is not to be used for any other purpose without the written consent of Techline Sports Lighting, Inc.

DRAWN BY: AMP
Date: 12/1/2025
SCALE: NTS
Page 2 of 2
25-4932-SB-AGI

Sky lighting Metrics



Pole Wattage Summary	
Scene: WALKWAY-PARKING	
Label	Total Watts
A1	4000
A2	2400
A3	4000
A4	4000
C1	3200
C2	3200
C3	3200
C4	3200
TOTAL	27200

Pole Summary			
Scene: WALKWAY-PARKING			
Poles	# Lums	MH	
A1-SB	3	60'	
A1-WALKWAY	2	60'	
A2-SB	3	60'	
A3-PARKING LOT	2	60'	
A3-SB	3	60'	
A4-SB	3	60'	
A4-WALKWAY	2	60'	
C1	4	60'	
C2	4	60'	
C3	4	60'	
C4	4	60'	

Luminaire Schedule				
Scene: WALKWAY-PARKING				
Symbol	Qty	Label	LLF	Lum. Watts
16	16	TSLEW-EV-NLV	0.950	800
10	10	TSLEW-EV-NLV	0.950	800
8	8	TSLEW-EV-NLV	0.950	800

Calculation Summary											
Scene: WALKWAY-PARKING											
Label	Area Size	Units	Avg	Max	Min	Max/Min	# Pts	PtSpclr	PtSectb	CV	UG
8_SKYGLOW AT 80 FT	60' x 60'	Fc	0.00	0.0	0.0	N.A.	2478	30	30	0.00	0.00
ELEVATION_Top_1											

*** DISCLAIMER ***
 DESIGN BASED OFF OF LATEST SATELLITE IMAGES AVAILABLE AT THE TIME OF DESIGN. ALL MEASUREMENTS/POLE LOCATIONS NEED TO BE FIELD VERIFIED FOR ACCURACY AND APPROVED BEFORE PRODUCTION CAN BEGIN."

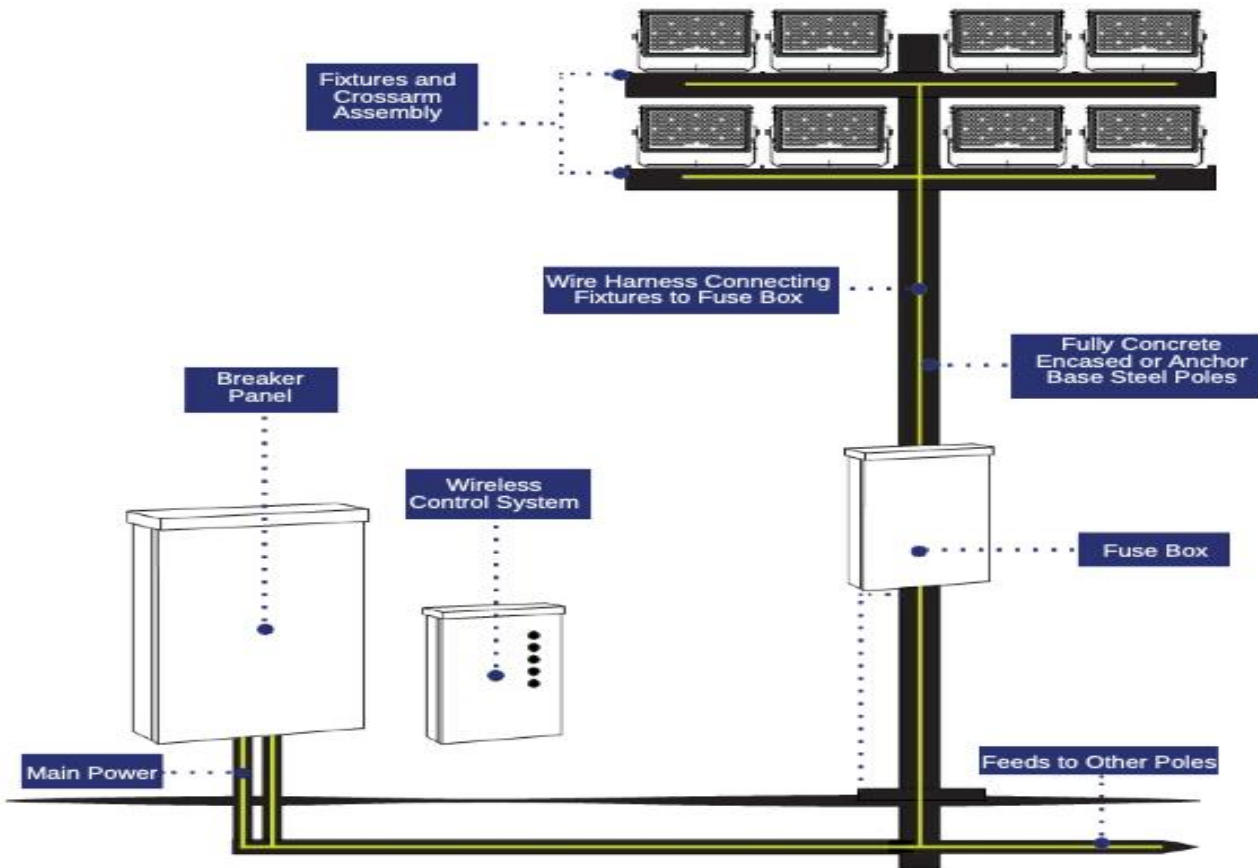


Acorn Hill Park
 Beth-Wood League Baseball,
 Woodbridge, CT
 Softball Field - 30/20 Fc
 25-4932-SB.AGI

DRAWN BY: AMP
 Date: 12/1/2025
 SCALE: NTS
 Page 1 of 2
 25-4932-SB.AGI

800 WATT

System Drawing



TSL800W

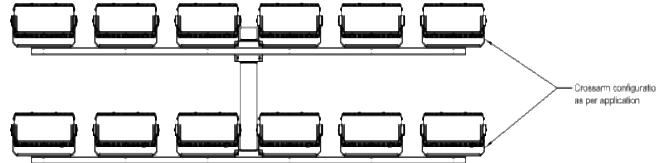
FIXTURE



Standard Visor



Extended Visor (optional)



Accessory Mounting Port 40" AGL
(w/ Hand Hole for access)

Accessory Mounting Port 20" AGL
(w/ Hand Hole for access)

Control/Electrical Cabinet
located 10' above grade
(w/ Hand Hole for access)

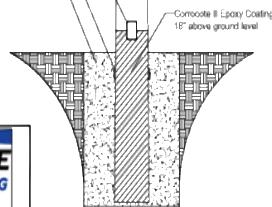
9" x 6" Hand Hole 18"
above ground level

7" x 5" Conduit/Wire entry
18" 24" below ground level
(Qty. 2)

3000 psi concrete

TSL65LA	
Mounting Height	60' *
Overall Length	70'
Length A.G.L.	60' *
Burial Depth	10'
Tip Diameter	5.79"
Butt Diameter	16.27"
Pole Shape	Round Tapered

* dimension to bottom row of crossarm



** Hot-Dipped galvanized after fabrication to ASTM A123 specifications

** NOT TO SCALE



15303 STORM DR.
AUSTIN, TX 78734
PHONE: (512) 977-8880
TOLL FREE: (800) 500-3161
FAX: (512) 977-8882

DATE: 06-16-20	REV: X	CHECKED BY:
DRAWING NUMBER: TSL 60L-FIX	DRAWN BY: WW	

CONCRETE ENCASED
GALVANIZED STEEL POLE

Purpose of Request

Requesting Town approval for installation of field lighting at Beth-Wood Acorn Field

Project fully funded by Beth-Wood Baseball

No financial contribution required from the Town

Lighting designed to meet Town standards and neighborhood expectations with automatic shutdowns programmed.

Financial Impact to the Town



100% of project costs paid by Beth-Wood Baseball



Includes equipment, installation, permitting, and coordination



No capital expenditure or ongoing operating cost to the Town



Project improves Town-owned asset at no cost

Neighborhood & Light Pollution Considerations

Professional LED sports lighting with precise optics

Fixtures are fully shielded and directed onto the field only

Lighting design minimizes spill, glare, and skyglow

Photometric analysis confirms negligible impact beyond field boundaries

Lights operated only during permitted hours



Benefits for Youth, Families, and the Community



- Allows weekday games after school and work hours
- Enables full-length practices during fall season
- Reduces late-night and weekend scheduling congestion
- Supports safe, supervised recreation for local youth
- Strengthens community sports programs



Why Lighting Is Needed

- Fall daylight hours significantly limit field availability
- Youth athletes miss practice opportunities due to early darkness
- Lighting allows more efficient use of existing field space
- Reduces pressure on other Town fields



Operations & Oversight



Lighting operated and scheduled by Beth-Wood Baseball



Usage aligned with Town-approved hours and policies



Lights turned off immediately after activities conclude
Or Automatically at 9PM on nights used.



Ongoing coordination with Town and Parks Department



- **Thank you for your consideration in this community improvement project**
- **Presented by Beth-Wood Baseball**

